



# WATTS CURRENT

Raccoon Valley Electric Cooperative



December 2010

## Basin Scholarship Available

Dependents of members of Raccoon Valley Electric Cooperative (RVEC) are eligible to apply for a \$1,000 scholarship to be provided by Basin Electric Power Cooperative and Corn Belt Power Cooperative, power suppliers of RVEC. 1-S-27-JA

The scholarship program is designed to encourage and recognize the achievements of a student living on electric cooperative lines. The scholarship must be used for educational costs and the student must enter college in the fall of the school year for which the scholarship is given. The applicant must be a student who is enrolled or planning to enroll in a full-time graduate or undergraduate course of study at an accredited, two-year or four-

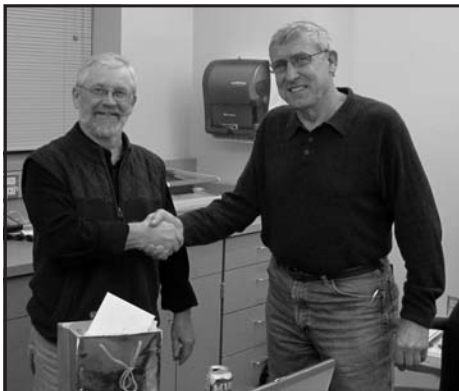
year college, university or vocational/technical school.

This scholarship is awarded without regard to other awards, loans or financial assistance the applicant may have obtained. Award of the scholarship is based on the following criteria: SAT/ACT scores, grade-point average, work experience, participation in school and community activities, a statement by the student explaining his/her educational and career goals and a written recommendation by a third party.

Applicants may get an application form from RVEC. Application forms are due February 5, 2011. For more information, contact Jill Hannasch at 712.659.3649 or 800.253.6211 or e-mail [jillh@rvec.coop](mailto:jillh@rvec.coop).

## Service Awards Presented

Mark Ludwig was presented an award for 25 years of service from Board President LaVerne Greving. Mitch McKeever was also presented an award for 25 years of service from CEO Jim Bagley.



## Winter Is Here!



Warm up those cold spots in your home with cove or baseboard heat.

Individual thermostats allow that cold bathroom, basement corner or family room to have individual temperature control. Call RVEC today.



## Holiday LED Winners

Randy & Gail Daniel won the lighted LED Christmas wreath and Ronald Sandhoff and Alan Meiners won the 5 string pack of LED Christmas lights. They won by returning a survey to Inside Information. Thank you to everyone who returned their survey.



**— CEO Comments —**

With the holidays over and the New Year started we are very busy at Raccoon Valley Electric Cooperative (RVEC). We have recently contracted over 200 miles of line replacement in response to our 2009 and 2010's ice storms. This construction equals about 16% of our total line miles. One of RVEC's goals in 2011 is to complete at least 300 miles. You will receive a letter in the coming month explaining our plans for completion of the whole 707 mile project, and the very restrictive requirements that Federal Emergency Management Agency (FEMA) and the State of Iowa has imposed on us.



Our New Year's resolution is to provide the best service possible to you our member/owners. If you ever feel that we are not providing a level of service that exceeds your expectations please contact me directly and we will work to rectify the situation. We are here to serve you!

**What To Do If the Lights Go Out!**

Winter weather can be harsh and unpredictable. Raccoon Valley Electric Cooperative (RVEC) wants you to be prepared in case severe weather causes a power outage. Here are a few tips for when winter weather hits:

- If your power goes out, see if your neighbors are also without power. If they have power, check to see if the red light is on inside your meter. If the red light is on the problem is on your end and you need to call your electrician. If the red light is not on call RVEC to report the outage. 18.33.04
- Turn off all lights in your home, but keep one light on to let you know when the power is restored.
- Unplug appliances, TVs, computers and all electronic equipment to prevent damage when the electricity is restored. If there are too many appliances drawing electricity when the power is first restored, the system could overload, causing the power to go out again.
- Have batteries handy for flashlights and a radio. Make sure these items are in a convenient location so you can find them in the dark.
- Remember to stay away from downed lines or tree limbs on power lines. Most downed lines are still "live" and can electrocute you if you touch them. Report these dangerous situations to RVEC.
- If you don't have an alternative heat source, put on heavy clothing before you get cold.
- Pull the drapes to save heat. Don't open windows or doors unnecessarily. You want to keep your heat in the house.
- Try to be patient while your power is being restored. RVEC will have your lights on again as soon as possible.

The most important thing to remember is to call RVEC. Please have your location number ready when you call in. We want to get your power turned on quickly and safely.

**Pack up Holiday Lights, but Keep Timers On**

If you were energy-smart over the holidays, you plugged your tree and outdoor Christmas lights to a timer that automatically turned them on at dark and off after about five or six hours.

That's a good energy-saving practice all year-round for all of your outdoor lights. It can also deter would-be robbers.

So can outdoor motion-sensing lights, which are an economical alternative to outdoor floodlights that you must leave on all night. Motion sensors illuminate an area only when they sense movement and will shut off automatically when the movement stops.

Indoors, use timers on radios, room lights and TV sets so they turn on and off at random times all day. Timers also work on landscape and patio lights.

Place timers on lights near the front and back windows of a home. And keep them active all year long—not just when you're out of town. A crook who has been watching the house to plan a burglary might notice if the lighting pattern suddenly changes. 14-S-12-H



**Touchstone Energy**<sup>®</sup>  
*The power of human connections*

## Duane Arnold Energy Center receives 20-year Operating License Extension

Iowa's only nuclear plant will continue powering the state for an additional 20 years following an announcement from a federal agency on December 16, 2010.

Officials at the Duane Arnold Energy Center were notified that the Nuclear Regulatory Commission has approved a 20-year license extension for the facility located in Palo, Iowa, allowing the plant to operate until 2034. DAEC is jointly owned by Corn Belt Power Cooperative – Raccoon Valley Electric Cooperative's (RVEC) wholesale power supplier - Central Iowa Power Cooperative and NextEra Energy Resources. 13.15.03

"We are pleased to have the relicensing approved and look forward to the next 20 years of providing nuclear energy to our member cooperatives. This source of carbonless generation plays an important role in Corn Belt Power's mission to provide reliable and affordable power to the members who own their cooperatives," says Kenneth Kuyper, executive vice president and general manager, Corn Belt Power.

The NRC approval comes just over two years after the joint owners of the plant entered the extremely rigorous and comprehensive license extension process conducted by the NRC.

The process included an all-inclusive environmental and safety review in addition to on-site inspections that are designed to ensure that the plant is ready for another 20 years of continued safe and reliable operations. Duane Arnold's extensive license application covered all aspects of the plant's operations, ranging from the environmental impact of an additional 20 years of operation to the maintenance and engineering programs that will ensure the station can safely operate over the extended license period.

"This milestone opens the door to an additional twenty years of steady jobs, clean power generation, and safe energy for Iowa," said Site Vice President Chris Costanzo, Next Era Energy Resources. "We have diligently maintained and upgraded our facility, and we are well-positioned to continue to power Eastern Iowa for many years to come."

DAEC's initial 40-year operating license was granted 1974 and set to expire in 2014. Like all other nuclear power plants, the DAEC license was issued for 40 years based on accounting estimates of the time required to recover plant construction costs.

The plant is owned by NextEra Energy Resources (70 percent), Central Iowa Power Cooperative (20 percent) and Corn Belt Power Cooperative (ten percent). DAEC has more than 600 employees. 4-S-4-L



*Corn Belt Power Cooperative directors, including Dave Onken, Director for Raccoon Valley Electric Cooperative, toured the Duane Arnold Energy Center last July. The Nuclear Regulatory Commission announced Dec. 16 that the nuclear plant will be relicensed for 20 more years, until 2034. Corn Belt Power owns a 10 percent share of the plant.*



*Duane Arnold Energy Center – Iowa's only nuclear power plant – received a 20-year license extension from the Nuclear Regulatory Commission Dec. 16. Corn Belt Power Cooperative, wholesale power supplier to Raccoon Valley Electric Cooperative, owns a 10 percent share of the plant, located near Palo, Iowa.*

# WATTS CURRENT

Published monthly by  
Raccoon Valley Electric Cooperative

-- Directors --

LaVerne Greving, Pres. .... Carroll  
Jeff Cranston ..... Odebolt  
Rick Handlos ..... Lake City  
Keith Kenny ..... Schaller  
Mark Ludwig ..... Breda  
David Onken ..... Glidden  
Brad Polzien ..... Wall Lake  
Tim Reeve ..... Glidden  
Steve Seidl ..... Coon Rapids

-CEO-

James E. Bagley

-Office Hours-

Monday - Friday  
7:00 a.m. to 4:30 p.m.

-Office Address-

Headquarters  
PO Box 486, 28725 Hwy 30  
Glidden, IA. 51443  
Phone: 712.659.3649  
Fax: 712.659.3716

Satellite

PO Box 397, 601 E. Main St.  
Sac City, IA. 50583  
Phone: 712.662.4275  
Fax: 712.662.4538

www.rvec.coop

e-mail: info@rvec.coop

For outages and emergencies --

Former Glidden REC members  
call: 712.659.3649

Former Sac County REC members  
call: 712.662.4275



Find us on facebook



Touchstone Energy®

The power of human connections

## Power Restoration Plan

As the winter temperatures change, storm systems are produced and with them potentially damaging winds, sleet and snow. RVEC would like to guarantee you will have power 100% of the time, but that just isn't possible.

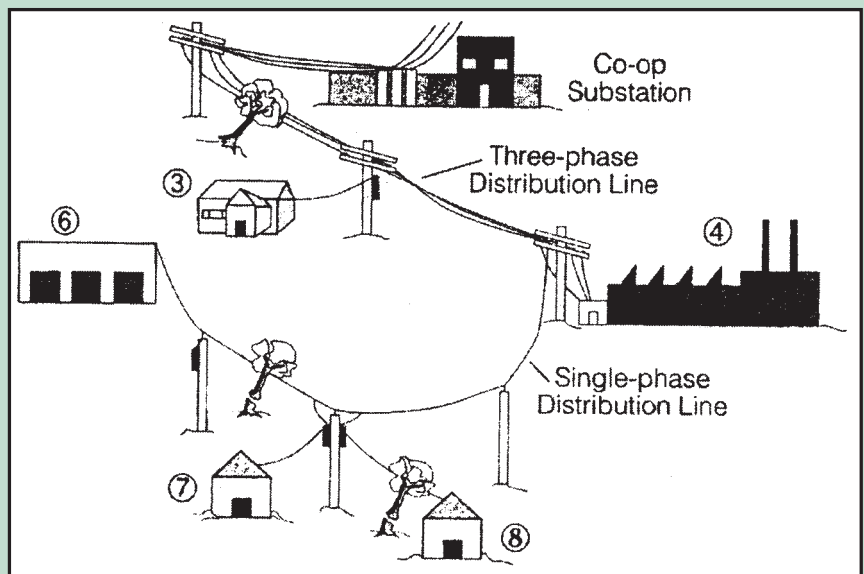
Immediately after a severe storm hits, RVEC linemen begin to assess the extent of the damage. The line superintendent designs a plan to restore power to the greatest number of members in the shortest amount of time. The severity of the outage and weather conditions always plays a role in the time it takes to restore power.

When a storm strikes, RVEC linemen are immediately dispatched to begin the restoration process. Repairs are made at the substations first, followed by major feeder lines and then individual service lines.

The last portion of the plan, dealing with individual outage situations, can take the greatest amount of time because of the great distance involved between houses. During that stage, linemen move house-to-house making repairs. 22.21.01

All during the power restoration efforts, the telephone calls are answered as they come in. During peak periods, all telephone lines coming into the office can be busy.

The diagram below shows how the restoration plan works. Repairs are made to lines from the substation first. This will restore power to House 3 and Factory 4. The main service line serving Houses 7 and Factory 6 will be repaired next. Finally, the individual service line to House 8 will be repaired.



## Spot Your Number

Read Watts Current and watch for your location number. If you spot it, call RVEC by the 20th of the month and you will receive an electrical bill credit for \$10.00.